



 VIDEO INTERCOM

Monitors and entry panels

IF YOU LOVE YOUR BUILDING

urmet

The Company

URMET

Urmet is an Italian company that designs, develops and markets products and systems for building automation.

Video-doorphone, telephony, smart home, professional video-surveillance, intrusion detection and fire-detection systems: solutions for every industry, developed in line with market demands.

Urmet stands out for its flair for innovation and for the development of kits that speed up installation and simplify function management, for residential, office and industrial buildings.

URMET GROUP

Urmet Group is made up of more than 60 companies that ensure a widespread and consolidated presence all over the world. Established in Italy in 1937, the Group soon developed at international level and now plays a major role on the international scene.

The head office is in Turin, where the Research & Development, Marketing, Logistics, Administration and Finance departments operate.



IF YOU LOVE YOUR BUILDING







Welcome home

Video door phone systems are dedicated to those who love to find the best technology and style in every detail of their home. They feature advanced functions that meet any and all communication requirements in any building. Featuring a high-end design with even greater resistance and performance, they express Urmet quality and excellence at their best.

For over 80 years, passion and commitment to research on lines, shapes and materials have enabled Urmet to create new solutions that break with tradition and that become true icons of style over time.

Quality is evident

Urmet products combine style and design with a great consolidated technological expertise and strong elements of research and innovation. The designed systems ensure comfort, security and extensive functions. The range of products is versatile and has no limits of application or use.



Urmet video door phone systems can integrate functions for control and management of security, video surveillance and home automation systems.





Simply versatile

Choosing Urmet products means making a conscious choice in terms of versatility and flexibility, and expanding the installation opportunities to meet very different system requirements. From residential villas to office blocks, Urmet technology offers advanced solutions for video door phone systems easy to configure and use.



Our video systems fit every system request in terms of functions, extension and materials. With digital or analogue technologies, you have absolute freedom to create your system solutions.

CallMe, the video door phone on your smartphone

With CallMe you can:

- > Answer remotely, when you are out, on holiday, at work
- > Answer when you are at home, but engaged in other activities
- > Open the gate or the door from your smartphone
- > Check your cameras, even with video door phone off, to enhance your security
- > Featuring a high-end design with even greater resistance and performance, they express Urmet quality and excellence at their best.

CallMe is compatible with all the Urmet digital video door phone (IPerVoice, IPerCom, 2Voice) and analogue (4+N e Coax) systems and with all the Urmet audio and video door phones.

- > For 2Voice and analogue systems, it is necessary to install the CallMe device on DIN rail or wall-mounted, without replacing the video door phone
- > For IP systems, you only need to download the App from the stores



| Call
Me |





Audio and video doorphones

Urmet video door phone systems are simply better. The choice of door phones and video door phones is complete and flexible, with a wide range of products compatible with digital and analogue systems. One wire is all it takes to enjoy the benefits of an extensive range of services, thanks to digital systems.

Technology and design lie at the core of the development of every single solution. All Urmet video door phones comply with ETS300381 and EN60118 European standards for hearing aids switched to the "T" position.



Max



vModo



Aiko



Nexo2



Mìro range



Signo



max|max_{LITE}

COMPATIBLE WITH



HEARING IMPAIRED
FUNCTION



Call forwarding on smartphone.



Integration with Yokis
for electrical wiring system automation.

Max is the latest generation Urmet IP touch 7" monitor revolutionising the world of video door phones.

ORIGINAL DESIGN, SENSITIVE TOUCH DISPLAY, HOME AUTOMATION CONTROL

Its sleek and versatile lines makes it an object with a unique design, which integrates perfectly in any contemporary interior. The screen leverages the sensitive touch technology to integrate such innovative functions as the home control, video surveillance system management, proximity key scanning for facilitated access, audio and video call and messaging management directly from a smartphone through the Urmet CallMe system. The simple and user-friendly interface is very easy to operate.

Black version



Yokis function user interface, smart home management



MAX LITE

Same features as Max but ideal for simplified video door phone systems that have no need of integrations with other home control and management systems.

Max perfectly combines with Nea Expi Touch design style



expi
touch

simon
urmet

FEATURES

- > 7" 16:9 touch display
- > Wall mounting or flush mounting installation
- > White and black frames
- > Dimensions (H x W x D): 134 x 208 x 19 mm - 5,27 x 8,18 x 0,74 in (5 mm thickness for the flush-mounted version)

For Max only: My1067+, iUVS plus, Yno apps are already installed for intrusion systems, cctv and smart home control.





 mmodo

COMPATIBLE WITH



HEARING IMPAIRED
FUNCTION



Call forwarding on smartphone.



Integration with Yokis
for electrical wiring system automation.

**vModo is the 7" colour monitor
with soft touch controls.**

CONVENIENT AND EASY

The wide 7" display always allows an excellent image view. The functions associated with the touch keys are easy to recognise and use: door opener, gate opener, mute and additional service.

Available in wall mounting version or flush mounting version on rectangular 3 modules or round ø60 mm flush boxes, or table top.

MORE FUNCTIONS

vModo can manage 2 smart home scenarios thanks to the built-in Yokis transmitter and 2 dedicated soft touch buttons.

Moreover, The MUTE function can be used also in timed mode, automatically deactivating the function after 8 hours.



vModo perfectly
combines with
Nea Expi
design style



expi

**simon
urmet**

FEATURES

- > 7", 16:9/4:3 display
- > Possibility of 2 intercom calls or call to switchboard
- > 2 Yokis radio channels
- > 2 relay outputs for additional services
(activated simultaneously with radio control)
- > Dimensions (H x W x D): 142 x 202 x 23 mm -
5,59 x 7,95 x 0,90 in



nexo2

COMPATIBLE WITH



Call forwarding on smartphone.

Nexo2 is the hands-free monitor with TFT 7" display and 5 buttons.

EASY BUT EVOLVED

Nexo2 represents technology evolution in the field of analogue video-doorphone systems: its technology improves the performance of existing systems without having to resort to extensive modifications.

Nexo2 is ideal to replace video door phones with handset and electronic call.



Nexo2 perfectly combines with **Nea Expi** design style



expi

simon
urmet

FEATURES

- > 7" TFT display
- > Wall mounting
- > All functions (audio on / off, door open, accessory functions) can be activated via five simple keys on the front
- > Dimensions (H x W x D): 142 x 202 x 22 mm - 5,59 x 7,95 x 0,86 in



aiko

COMPATIBLE WITH



HEARING IMPAIRED
FUNCTION



Call forwarding on smartphone.

Aiko is the video door phone featuring a compact design and polished finish, with soft lines, available in white and black versions.

PERFECT IN EVERY DETAIL

TFT 4,3" display, soft-touch controls, outdoor station camera activation function for video surveillance purposes, ready for integration with four further control cameras.

Aiko needs recessed installation, wall mounting or a special desktop stand. Its simple and user-friendly interface and its display configuration menu provide easy access to all functions.



Aiko perfectly combines with **Nea Flexa** design style



flexa

simon
urmet

FEATURES

- > 4,3" display with OSD menu
- > Colours: white and black, with glossy finishing
- > Wall mounting, table top, flush mounting
- > Full-duplex communication
- > Management of up to 32 intercom calls
- > Dimensions (H x W x D): 160 x 130 x 29,7 mm - 6,29 x 5,11 x 1,16 in



miro|miro

HANDS-FREE

COMPATIBLE WITH



HEARING IMPAIRED
FUNCTION



Call forwarding on smartphone.



Integration with Yokis
for electrical wiring system automation (hands-free version only).

Miro video door phones are available with handset or hands-free versions. Sturdy and robust, their case is made of ABS and white or black gloss finishing.

MÌRO VIDEO RANGE

With Miro you can get the best capability, functionality and versatility out of the 2Voice system also for audio-only or video installations. The video door phones have a 4,3" display, standard buttons for auxiliary services and the support for hearing aid devices. Available in wall, table and flush-mounting versions.

The integration with Yokis radio transmitters allows the creation of easy home automation scenarios.

Black version



Miro perfectly combines with Nea Expi and Flexa design style



flexa

simon
urmet

FEATURES

- > 4,3" 16:9 Display
- > Programmable functions buttons
- > Intercom calls
- > Auto-activation and control of CCTV cameras
- > Dimensions - hands-free version (H x W x D):
129 x 160 x 23 mm - 5,07 x 6,29 x 0,9 in
- > Dimensions - handset version (H x W x D):
200 x 173 x 52 mm - 7,87 x 6,81 x 2,04 in



miro AUDIO | miro AUDIO HANDS-FREE

MiRO AUDIO HANDS-FREE
COMPATIBLE WITH

MiRO AUDIO COMPATIBLE WITH



Call forwarding on smartphone.



Integration with Yokis
for electrical wiring system automation
(hands-free version only).

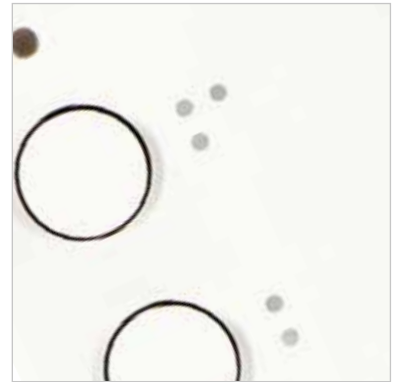
Mìro audio range is available for 2Voice systems. Moreover, the handset version can be used in analogue systems and the hands-free version in IP systems.

MÌRO AUDIO: PERFECT FOR MIXED SYSTEMS AND RENOVATIONS

In the digital 2Voice version, Mirò Audio adapts perfectly to its role of secondary indoor service station; in analogue systems Mirò Audio is compatible with all 4+n systems and is the ideal choice to replace old door phones or to turn the old bell ring into an audio system.

MÌRO AUDIO HANDS-FREE: A GREAT LITTLE SPEAKER

Mìro Audio hands-free version is extremely small and it can be wall-mounted on rectangular 3 modules or 60 mm diameter round boxes.



Mìro perfectly combines with **Nea Flexa** design style



flexa

**simon
urmet**

FEATURES

- > White body with glossy finishing
- > Customised ringtones for external and intercom calls
- > Auxiliary functions buttons
- > Dimensions - handset version (H x W x D):
200 x 90 x 52 mm - 7,87 x 3,54 x 2,04 in
- > Dimensions - hands-free version (H x W x D):
Flush-mounting version on UNI 503 box
- 80 x 110 x 9 mm - 3,15 x 4,33 x 0,35 in
Wall-mounting version - 80 x 110 x 18,5 mm -
3,15 x 4,33 x 0,72 in



signo

COMPATIBLE WITH



HEARING IMPAIRED
FUNCTION



Call forwarding on smartphone.

Signo is the classical Urmet video door phone. Elegant, thanks to the clean lines and the thickness lower than 5 cm and functional, because only four buttons allow you to control all functions.

BEAUTY WITHIN REACH

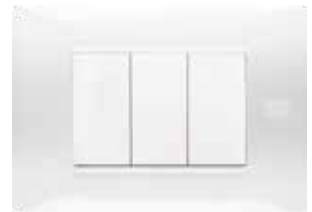
Signo features a door opener button and another three for the auxiliary functions provided for Urmet digital systems: exchange call, intercom, activation of additional services, pedestrian and vehicle access opener.

Signo needs a recessed installation, wall mounting or a special desktop stand. Signo Video 4" TFT screen colours are bright and clean, providing clear, high-quality images.

Also available in audio only version.



Signo perfectly
combines with
Flexa design style



flexa

**simon
urmet**

FEATURES

- > 4" display
- > White body with glossy finishing
- > Wall, table or flush mounting
- > Minimum encumbrance
- > Compliant with EU ETS300381 and EN60118 regulations on T-mode hearing aid devices
- > Dimensions (H x W x D): 225 x 205 x 50 mm - 8.85 x 8.07 x 1.97 in

Entry panels

The range

Solidity, compactness, design and performance. Urmet entry panels meet all of these requirements, thanks to a full range of styles and functions.

For analog and digital systems, with modular or monoblock body frames and classic or modern lines.



Alpha



Elekta&Elekta Steel



Sinthesi Steel



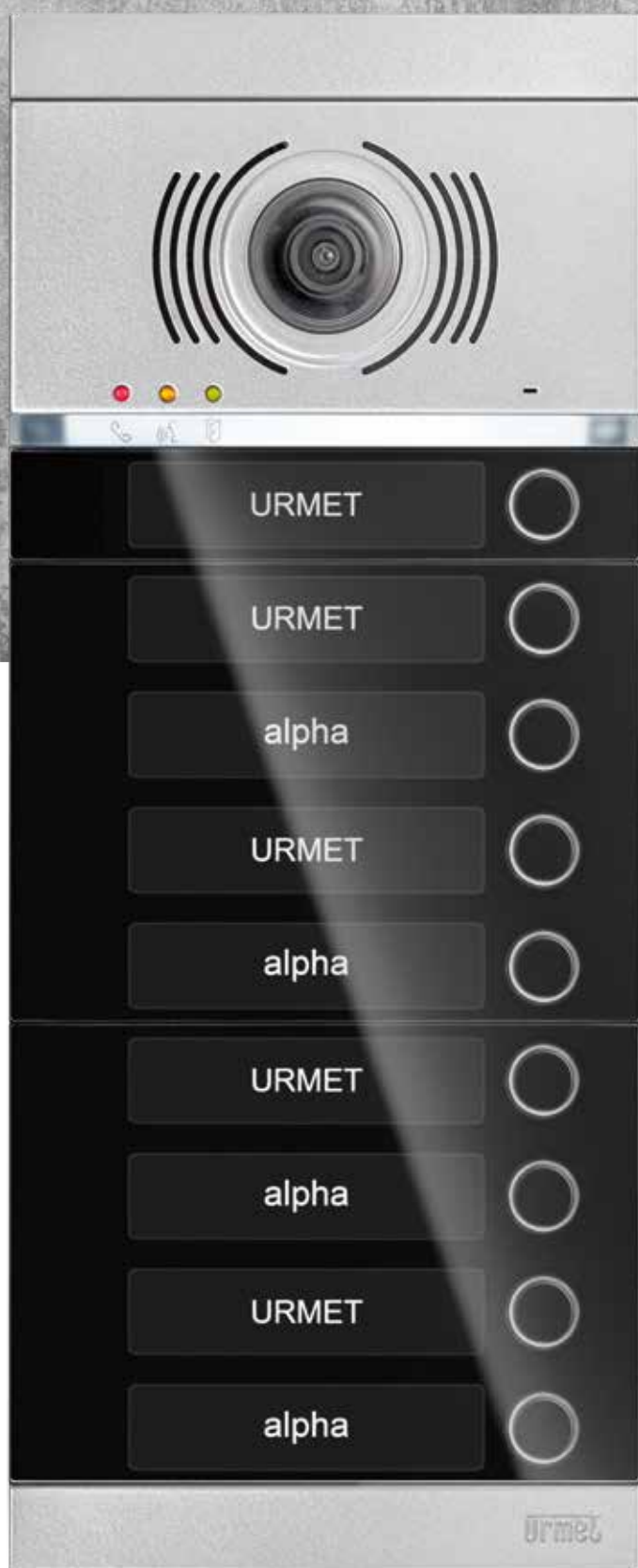
Sinthesi S2



Mikra2



Prodel entry panels



COMPATIBLE WITH



Programming on entry panel
or from smartphone/tablet/PC

Alpha is the modular entry panel, without frame, in audio, video and digital versions, quick to install and easy to program.

ALPHA: ICON OF ELEGANCE AND INNOVATION

Steel and methacrylate finish together with the modules that make it up ensure maximum resistance to external agents such as water and dust, and to any impact: Alpha has IP55 protection class (the highest class in the video door entry system sector) and IK08.

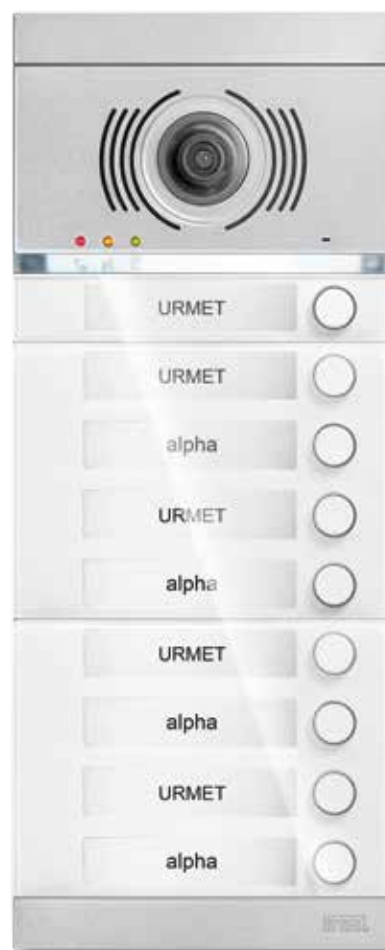
Once it has been installed, its projection from the wall is practically non-existent, an unmatched record among all the modular entry panels currently on the market: only 12 mm for the flushmounting version and 29 mm for the surface wallmounting version.

Available in black and white version, with buttons on one or two rows.

29 mm
per la versione
da appoggio

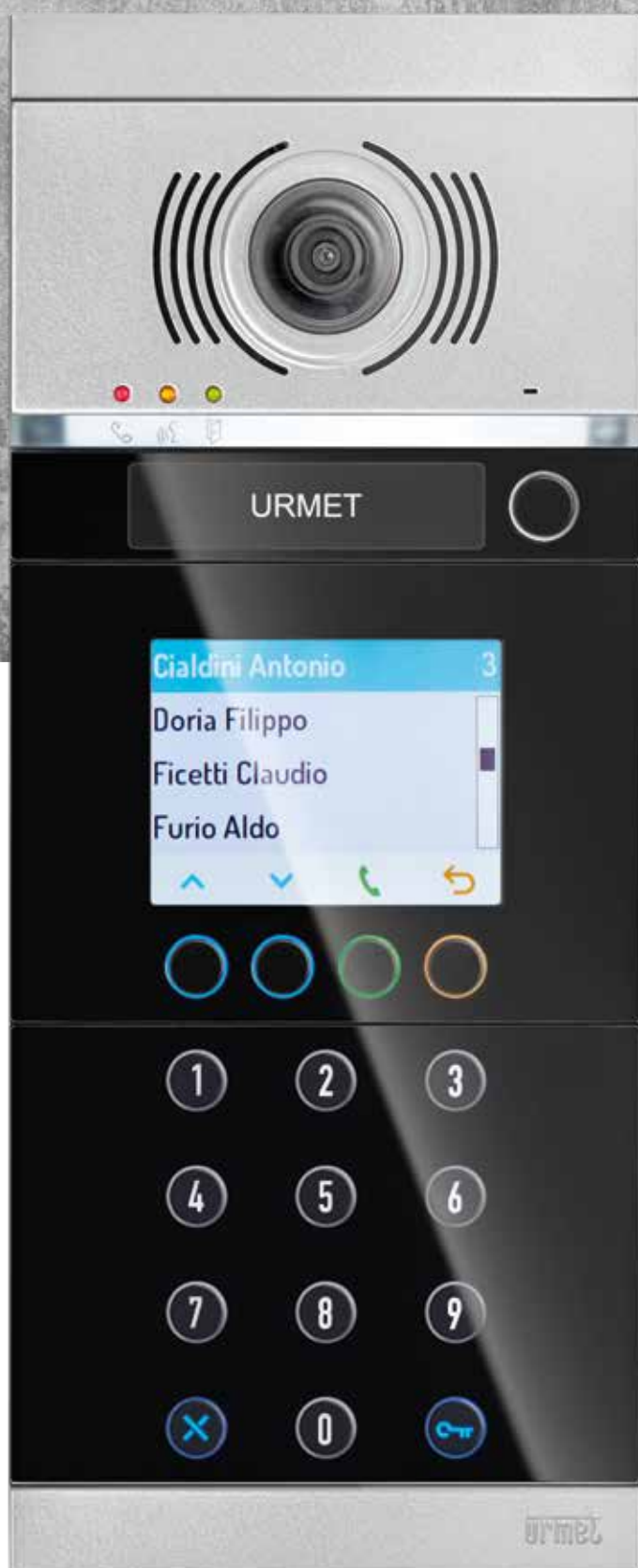


Glossy white
finishing



FEATURES

- > Coated steel and methacrylate finishing
- > IK08 impact resistance
- > IP55 protection class
- > Wide-angle camera
- > 2Voice system



COMPATIBLE WITH



Programming on entry panel or from
smartphone/tablet/PC

ALPHA: THE MAXIMUM OF TECHNOLOGY

In the digital version, Alpha has a 3,5" colour display and soft touch buttons. Completely modular, it allows the door to be opened with a numerical code and can manage 2 entry doors/ gates (pedestrian and driveway entrance). It features a user code for emergency calls which activates when several buttons are pressed at the same time.

The digital call module is completely modular, made up of single elements to create any type of combination.

Specific categories of users can be selected in the directory to speed up the search, e.g. lawyers, doctors or other professionals.



Rain hood



FEATURES

- > Coated steel and methacrylate finishing
- > IK08 impact resistance
- > IP55 protection class
- > Wide-angle camera
- > 2Voice system



COMPATIBLE WITH



HEARING IMPAIRED
FUNCTION



Elekta is the digital entry panel with IP protocol, black and polished finish, smooth with chrome-plated edges.

HI-TECH SOPHISTICATION

Video door phone functions are supplemented with all advanced functions of the Urmet digital and IP systems: call from name directory, video message with customisable logo, route indication from entry gate to selected residence, integrated video surveillance.



FEATURES

- Black body with glossy finishing
- 3,5" colour display
- Alphanumeric keypad
- Audio and video message box
- Compliant with EU ETS300381 and EN60118 regulations on T-mode hearing aid devices
- Dimensions (H x W x D): 310 x 130 x 42 mm - 12.2 x 5.11 x 1.65 in



elektro
steel

COMPATIBLE WITH



HEARING IMPAIRED
FUNCTION



Elekta Steel is the vandal resistant version of the Elekta IP digital entry panel. Elekta Steel has a one-piece polished steel body with flush moving elements: this design concept dramatically reduces the possibility of damage and lends it a sturdy, pleasant appearance. Elekta Steel features IK09 impact resistance degree and IP45 protection degree against the infiltration of liquids and fine dust.

VANDAL RESISTANT FUNCTION

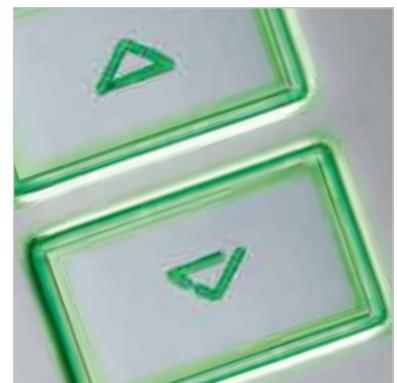
Elekta Steel requires flush installation and is secured to the wall with special Torx screws. Its compact one-piece steel body offers no pry points. The integrated proximity key scan allows to effectively control all accesses.



Coloured versions of Urmet entry panels are made in collaboration with Prodel, a company of the Group. Prodel offers a wide range of models and functions compatible with Urmet digital and analogue systems. All products undergo PVD anti-oxidisation treatment.



Elekta Steel is available in 3 different colours with PVD finishes and 5 RAL colours. For further information please contact Urmet sales network.



FEATURES

- > Polished steel
- > 3,5" colour display
- > Alphanumeric panel
- > Audio - video messages recording
- > Compliant with EU ETS300381 and EN60118 regulations on T-mode hearing aid devices
- > Dimensions (H x W x D): 310 x 130 x 42 mm - 12.2 x 5.11 x 1.65 in



is a stainless steel

COMPATIBLE WITH



HEARING IMPAIRED
FUNCTION



Sinthesi Steel is style designed for security; it guarantees advanced vandal resistant protection, as well as its typical operating versatility.

UNPARALLELED QUALITY AND RESISTANCE

Sinthesi Steel polished steel body with flush elements dramatically reduces the possibility of tampering. Its impact resistance is rated IK09, its protection against the infiltration of liquids and fine dust is rated IP45.

The wide-angle colour camera allows for long-range video recording.

Sinthesi Steel needs recessed or surface wall mounting in appropriate housing boxes. Installation is quick and easy as all modules snap onto the wall frame.

Available in digital version or with buttons.



Digital version



Sinthesi Steel is available in 3 different colours, with PVD finish. For further information please contact Urmet sales network.

FEATURES

- > Vandal resistant steel body, with flush buttons
- > Compatible with Sinthesi S2 and K-Steel flush-mounting boxes
- > Wide-angle camera 120° /90°
- > IP45 protection degree (ingress of solid objects and water)
- > IK09 degree (mechanical impact resistance)
- > Pre-wired modules



is a
synthesis

COMPATIBLE WITH



HEARING IMPAIRED
FUNCTION



Sinthesi S2 is Urmet's modular entry panel in aluminium exquisitely finished, functional and performing.

MODULAR AND VERSATILE

Sinthesi S2 is available with a broader range of modules, which also includes speech synthesis systems and LED signalling.

Sinthesi S2 is compatible with hearing aids switched to the "T" position that allow the hearing impaired to join in the conversation.

Sinthesi S2 is compatible either with a recessed installation or can be wall-mounted in a dedicated steel housing with a rain visor available as optional.

Available in digital version or with buttons.



Prodel
URMET GROUP

Sinthesi S2 is available in 5 RAL colours. For further information please contact Urmet sales network.

FEATURES

- > Multiple installation options, horizontal or vertical
- > Compatible with Sinthesi flush-mounting boxes
- > Access control
- > IP42
- > Quick and easy installation
- > Compliant with ETS300381 and EN60118 European standards for hearing aids switched to the "T" position



COMPATIBLE WITH



Mikra2 is the entry panel designed for one and two-family users, with its compact design and its structure made of Zamak, which protects it against unfavourable weather conditions.

MODERN LINES, QUALITY AND RELIABILITY

The essential and sharp aesthetic lines combined with the improved robustness and resistance to external agents make it the ideal entry panel for small installation contexts. The protection class IP55 ensures the entry panel long durability over time.

From a performance point of view, Mikra2 provides a very high image quality thanks to the wide angle of the camera.

In the solution for one-family villa, the system status indication makes its use easier for disabled people.



Mikra2 is available also in Exigo, Titanium and Allinox version.
For further information
please contact Urmet sales network.

FEATURES

- > Zamak body
- > IP55 protection degree
- > Wide-angle camera
- > It can be installed in surface wall mounting, semi-flush installation with proper accessory, or plate mounting configuration



COMPATIBLE WITH



Exigo is built on the basis of customers' specific demands. The customer may choose the material, shape, size of the outer cover and operating functions of the entry panel. Exigo is available with audio and video configuration, it can also integrate access control function with proximity sensor, digital directory and door opener systems. All models come with PVD anti-corrosion and anti-oxidation treatments. Exigo is top-notch quality: a quality you can touch and feel.

VERSATILE AND UNIQUE

Exigo needs a recessed installation with dedicated box Mod. 625 and Sinthesi S2 or using flush-mounting boxed already installed, thus avoiding costly repair works. Installation is easy as it is pre-assembled at the factory. Exigo is compatible with all of Urmet's door phone and video door phone systems.

Engraving is possible on nameplates (available in brass or anthracite PVC) and also on the panel fronts, with the possibility to choose between 2 typefaces.



Exigo is the entry panel that offers endless customisation options and refined finishes, in polished and satin-finished brass with steel-chrome, gun-metal grey, copper bronze, iron-mica colour finishes. Even shapes can be customised to user's preferences thanks to Prodel's special machining capabilities.



Prodel
URMET GROUP

For further information
please contact Urmet sales network.

FEATURES

- > Glossy or matt finishing
- > Customisable dimensions
- > Anti-corrosion and anti-oxidation process, utmost resistance to weathering agents
- > Flush-mounting



COMPATIBLE WITH



Titanium is the vandalproof entry panel, made by Prodel, compatible with Urmet's IPercom, IPerVoice and 2Voice digital systems, that adapts to any context.

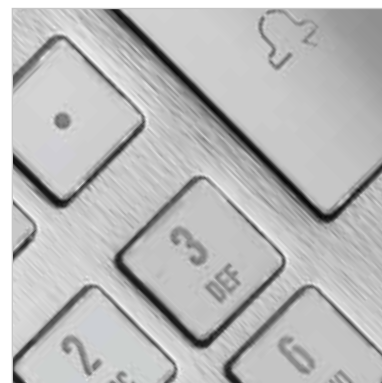
WELCOME STYLE

Fully customisable in dimensions and finishing, Titanium is robust and guarantees high resistance to atmospheric agents.

The steel body structured is secured by an exclusive treatment that prevents corrosion and oxidation. Titanium offers customized solutions and it combines perfectly the elegance of forms with the technology of the most advanced Urmet communication systems.

Ideal to renew existing installations, getting the class and the design of an artistic entry panel with no need of masonry.

Just 3 mm
thickness



For further information
please contact
Urmet sales network.

FEATURES

- > Glossy or satin finishing
- > 100% customisable
- > Compatible with all Urmet systems
- > Anti-oxidation process
- > Urmet electronic equipment fitted in one single monoblock plate
- > Shapes e dimensions fit into existing flush boxes
- > 3 mm (0,18 in) thickness single block structure panel



Exigo digital
brass



Allinox digital
inox steel



Elekta Steel
copper bronze



Titanium
aluminium



Sinthesi S2
white

Special entry panels

On specific customer request, Urmet - through its subsidiary company Prodel - manufactures customised products able to meet the needs of advanced customisation and care for details. The customer can choose entry panel materials, shapes, size and operational functions.

Depending on the models, the cover plates are available in audio and video configurations, with keys or in digital versions; they can have squared or rounded shapes and special engravings. It is possible to choose different materials, from elegant brass to robust and resistant steel 316. Several finishes are available: polished, matte or satin-finish with bronze, gun-metal grey, copper, iron-mica, white, black, aluminium and steel-chrome colour variants.

Each entry panel undergoes the PVD anti-corrosion and anti-oxidation treatments, ensuring a unique quality on the market. Special entry panels made by Prodel can be integrated into all Urmet video door phone systems and are compatible with the existing flush-mounting boxes.



Sinthesi Steel
black



For further information, please visit www.prodeltorino.it or contact Urmet sales network.

2-SMART PANEL



**SMART
AND
INTUITIVE DESIGN**



ACCESS CONTROL SPECIALIST

2-SMART PANELS

DDA COMPLIANT



SPECIFICATIONS

- > Information on the display
- > Vocal synthesis
- > Optimized installation and maintenance
- > Magnetic loop
- > Easy firmware upgrade
- > Capacity 4 000 apartments
- > Embedded box on hinges and vertical adjustment
- > Depth of installation 60 mm
- > IK08 and IP54

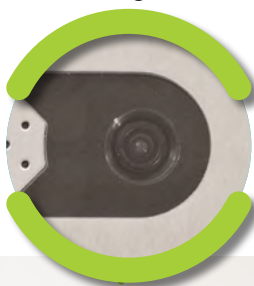
Bright 4" TFT screen

Wide angle camera
120 degrees

backlit
Braille buttons

Possible customization
of 4th button

Built-in reader



STAINLESS STEEL
FD-603-003



ZAMAC BLACK
FD-603-053



ZAMAC GREY
FD-603-051

VR screws



|U1| VOICE

FULL IP VIDEO INTERCOM
DIGITAL SYSTEM

IF YOU LOVE YOUR BUILDING

urmet

Call Module

Private Call Module



Call Module

- 4.3-inch TFT display screen
- Project pictures and customized LOGO
- Support IC card
- Automatic fill light of high-light LED at night
- Door status detection

1709/18 (Silver) 7" IP Monitor
1709/19 (Golden)



PARAMETERS

Resolution	1024*600
Working Voltage	DC 24V
Working Temperature	-10 ~ +55
Dimension (L*W*D)	200*130*17.5mm
Interface	Standard Network Interface
Installation	Wall mount

Overview

This product is based on TCP / IP transmission protocol equipment, is the main component of digital building intercom system equipment, support visual intercom, defense area settings.

Functions and Characteristics

- ◆ Adopt 7-inch capacitive touch screen
- ◆ Support 48V standard PoE power supply
- ◆ Image capture function
- ◆ Voice messaging
- ◆ Support floor call function
- ◆ Lift control function
- ◆ Alarm system
- ◆ With intercom function
- ◆ Call switch board
- ◆ Scenario mode
- ◆ Support smart home function
- ◆ SOS information
- ◆ Made of high performance zinc aluminum alloy

Sales network

For assistance and information about Urmet products and systems you can scan this QR code with your smartphone or visit www.urmet.com >> Contacts >> Export Sales Network



All Urmet products bear the C € mark

Urmet S.p.A. reserves the right to make changes to its products at any time, without prior notice



2Voice, IperVoice and IperCom
are registered trademarks of Urmet S.p.A.

Print: Servizi Tipografici Carlo Colombo - Rome
Released in September - 2019



URMET S.p.A.

Via Bologna, 188/C • 10154 Torino

urmet.com • info@urmet.com • follow us on  

urmet